

The **Master Lock** Company

Property. People. Life.

Laser Engraving Transition Reference Guide

Retirement of 6835/S6835 Series Safety Padlocks

Please note: As customers transition from the 6835/S6835 Series to the A1100/S1100 Series padlocks, there are minor differences in the naming of the laser engraving areas on the lock bodies. There are no changes to the number of laser engraving areas available, nor will there be an impact to the number of lines of text or characters available.

Please reference the table below to ensure accuracy when completing the laser engraving forms to submit replacement padlock orders.

LASER ENGRAVING TRANSITION OVERVIEW		
<u>EXISTING</u> MASTER LOCK 6835/S6835 SERIES LASER ENGRAVING		<u>NEW</u> AMERICAN LOCK A1100/S1100 SERIES LASER ENGRAVING
AREA 1 (TEXT OR LOGO)	➤	AREA 1 (TEXT OR LOGO)
AREA 2 (TEXT)	➤	AREA 3 (TEXT)
AREA 3 (TEXT OR LOGO)	➤	AREA 5 (TEXT OR LOGO)
AREA 4 (TEXT)	➤	AREA 6 (TEXT)
AREA 5 (TEXT)	➤	AREA 2 (TEXT)
AREA 6 (TEXT)	➤	AREA 4 (TEXT)



Master
Lock

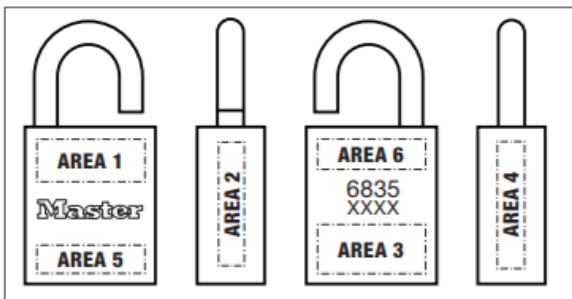
AMERICAN
LOCK

SentrySafe

Laser Engraving Transition Reference Guide

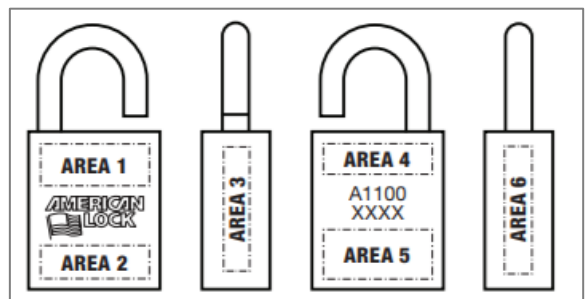
Retirement of 6835/S6835 Series Safety Padlocks

Master Lock 6835/S6835 Series



[Download 6835/S6835 Series
Laser Engraving Form](#)

American Lock A1100/S1100 Series



[Download A1100/S1100 Series
Laser Engraving Form](#)

For more information and ordering assistance, contact your distributor or call Master Lock Customer Support at 1-800-308-9244.