



THE GLOBAL EXPERT IN LOCKOUT TAGOUT SOLUTIONS



PROTECT YOUR EMPLOYEES

SAFETY PADLOCKS

KEY TRACEABILITY **LifeGuard**

Free key charting service: Records the key numbers used by customers, ensures no unintended duplication of keys, provides unique user ID number to customers

PADLOCK IDENTIFICATION

Master Lock offers services to customize padlocks which provide quick and easy identification

Labels: Write worker's name, add photo I.D., department, division or shift number



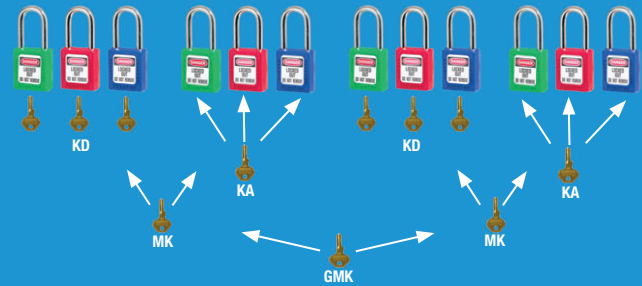
Laser engraving: Engrave logos, numbers and names (up to 6 areas)

Colors: Choose up to 9 body colors



KEY SYSTEM

Establish a safe and convenient locking system that would fit your lockout procedure needs



KD-Keyed Different: One key opens only one padlock

KA-Keyed Alike: One key opens all locks within the same group

MK-Master Keyed: One key opens all padlocks within one group KD or KA

GMK-Grand Master Keyed: One key opens all padlocks across several groups KD, KA or MK

THERMOPLASTIC DIELECTRIC

Ideal for
electrical
lockout

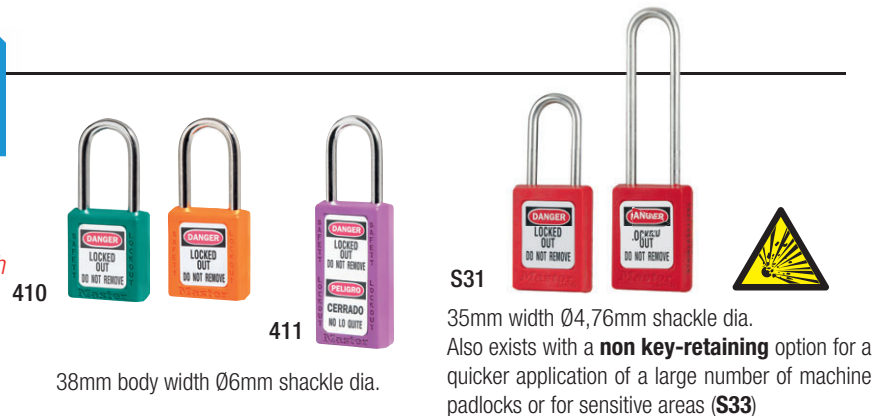
- Lightweight thermoplastic body
Offers superior performance against chemicals, moisture, heat, cold and UV
Operates from -56°C to +176°C
- Composite shackle
Non-conductive, non-magnetic, non-sparking
- Identification label included
- Key retaining (406 only), supplied with one key



THERMOPLASTIC

Ideal for
valve
lockout

- Lightweight thermoplastic body
Offers superior performance against chemicals, moisture, heat, cold and UV
Operates from -56°C to +176°C
- Stainless steel or hardened steel shackle
Provides superior corrosion resistance and great cut strength
- Available with long shackle and tall body
Fits more places and applications
- Identification label included
- Key retaining, supplied with one key



ALUMINIUM

Anodized body
ideal for food
industry

- Durable aluminium body
Offers protection in harsh environments
- Chrome plated or boron alloy steel shackle
Provides superior cut resistance and extra corrosion resistance
- Available with long and extra-long shackle
Fits more places and applications
- Key retaining, supplied with one key

38mm body width
Ø6mm shackle dia.

S1100
Series



MAXIMUM PADLOCK PROTECTION

Extreme environment padlock covers to keep out grit, dirt and dust



Available on all Master Lock
lockout padlock



ELECTRICAL LOCKOUT DEVICES

CIRCUIT BREAKER LOCKOUT



S2390

S2393

S2394



491B



493B

- Universal mini circuit breaker lockout
- Fast and easy to install - no tool required

- Ideal to lockout larger circuit breakers
- Exist in 2 sizes (493B)



S3821

- S3821: Miniature Circuit Breakers (120/240 V)
- S3822: Molded Case Circuit Breakers (480/600 V)
- S3823: Oversized Handle Circuit Breakers (480/600 V)



S3821



S3822



S3823

- Dependability: Consistently attach to breakers and remain secure
- Efficiency: Compatible with wide variety of circuit breaker handle shapes and sizes
- Ease of Use: Lightweight, one piece designs that require no tools for installation

CABLE LOCKOUT



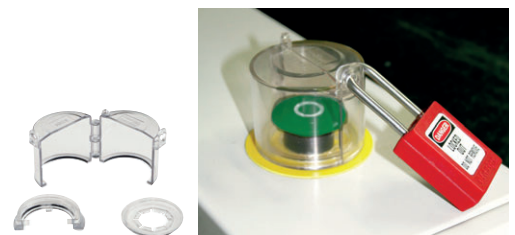
S866

- Dielectric nylon core retractable cable lockout device
- Ideal for electrical applications
- 2,74m cable x 3,3mm diameter



PUSH BUTTON AND ROTARY SWITCH COVERS

Ideal for occasional lockout of a switch or control



S2151

GROUP LOCKOUT

LOCKOUT BOXES

Perfect solution for shift work with staggered hours or subcontracted operations



498A
Portable



503RED
Wall mounted
or portable



S3650
Portable with
Wall Mounting Bracket



S600 series
Portable

LOCKOUT HASPS

Safety hasps accommodate multiple lockouts on the same equipment



428
Non-conductive
hasp



420
Steel hasp



427
Labeled snap-on
lockout hasp

MECHANICAL LOCKOUT DEVICES

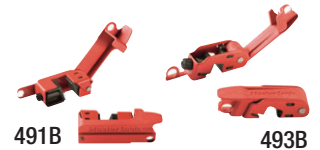
ADJUSTABLE CABLE LOCKOUT



Tough and flexible cable, perfect for any lockout application

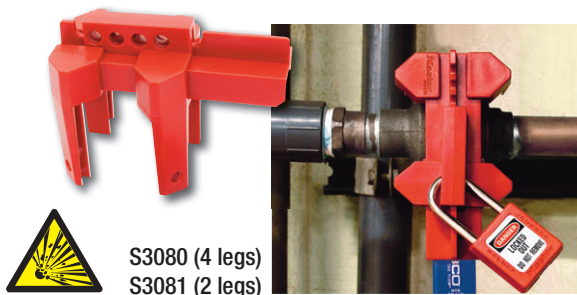
- Patented steel braided cable with clear plastic coating
- Durable, lightweight thermoplastic body withstands chemicals and extreme environments
- Integrated safety hasp with cable cinching function; cinches tight to remove slack and hold firm
- 1,80m standard cable x 4mm diameter
- Available in custom lengths from 0.60m to 15m long

- Includes a retractable cable system to manage the excess cable during a lockout and make the device itself more convenient to transport and store
- Can be used with 491B/493B for ball valve applications
- 2,7m cable x 3,3mm diameter
- Patented cable



ADJUSTABLE BALL VALVE LOCKOUT

Adjustable device to fit a variety of ball valves and pipes



S3080 (4 legs)
S3081 (2 legs)

BUTTERFLY VALVE LOCKOUT

Unique and patented adjustable design to fit any sizes of butterfly valves

- Compact and easy to use
- Thermoplastic construction to withstand the toughest environments



GATE VALVE LOCKOUT

Surrounds valve operating handle, protecting against accidental valve opening

- Lightweight and robust
- Resistant to high temperatures and chemicals



480 - 481 - 482 - 483 - 484

BLIND FLANGE LOCKOUT

Best solution for pipeline maintenance

- Fully conceals flange bolts to prevent from removing the blind
- Durable aluminum and hardened steel construction withstands tough conditions
- Four locking holes allow for multiple workers to lockout device at one time



S3922
Available in 3 sizes



All mechanical lockout devices can be used with Master Lock padlocks and tags

More products on www.masterlock.eu

 Suitable for use
in explosive atmospheres

LOCKOUT DEVICES

PERMIT CONTROL BOARD

The permit display board provides the function of three products into one device.

- Paperwork display: Presents and protects work permits and other procedure documents.
- Group Lock Box: Isolates and secures equipment keys when group lockout procedures are underway.
- Storage box: Stores equipment locks.
- The modular design allows the paperwork display and the lockbox to be mounted and used separately



S3500

STATIONS AND KITS

STATIONS

Offer the ultimate storage space for large facilities or multiple departmental use

- Durable construction
- Some models can hold up to 20 padlocks



1482B

S1518

KITS

Compliant with the "17th edition BS 7671" in the UK



ELECKIT-EN
Electrical lockout kit



MAINTKIT-EN
General maintenance kit

CUSTOM KITS

You can also build kits with your choice of lockout padlocks and accessories. Please contact your local Safety distributor for more information.



SAFETY TAGS

MAINTENANCE TAGS

Do not operate safety maintenance tag, english, 1 bag with 100 tags



S297

BOXED ROLL OF TAGS

Durable one-time-use tags stored in a box to provide convenient storage and transportation between job sites



S4810LENUK

GUARDIAN EXTREME™ TAG

"do not operate"
(6 tags per pack)

- Safety identification
- Extreme environment

S4002



Master Lock tags are available in several languages, contact us for availability

More products on www.masterlock.eu

WHAT IS LOCKOUT / TAGOUT ?

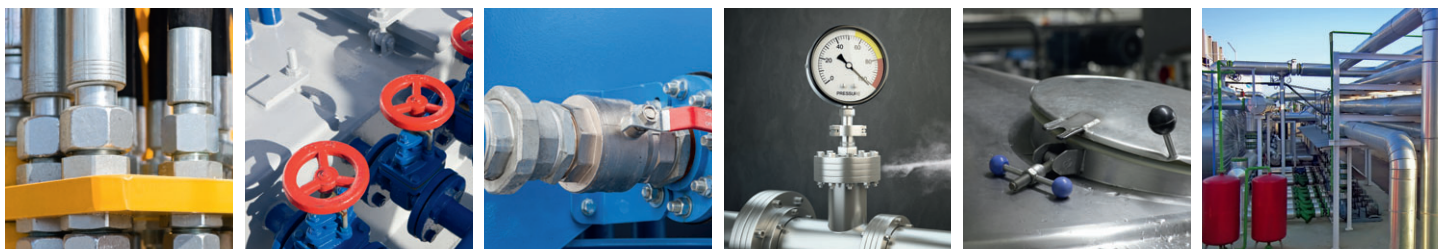
Each year, thousands of work accidents occur while repairing or servicing industrial equipment, the unexpected startup or release of stored energy can cause accidental injuries or even death. Most of those tragedies are due to energy sources that have not been isolated. These can be prevented through a complete Lockout Tagout program.

Lockout Tagout is the process of addressing and controlling hazardous energy which are potentially harmful to employees. It implies the placement of a lockout padlock, devices and tag on an energy-isolating device, ensuring that the equipment being controlled cannot be operated until the lockout device is removed.



HAZARDOUS ENERGIES

Energy sources include **electrical, mechanical, hydraulic, pneumatic, chemical, thermal** or other sources on machines and equipment that can be hazardous to workers.



7 STEPS PROCESS FOR LOTO

Master Lock advises on a 7 step process to implement the right Lockout Tagout program



Prepare for shutdown



Notify all affected employees



Equipment Shutdown



Isolation of system from hazardous energy



Dissipation of residual or stored energy



Lockout/Tagout



Verify Isolation

REGULATIONS IN EUROPE

- Council Directive 89/655/EEC of 30 November 1989 concerning the minimum Safety and Health requirements for the use of work equipment by workers at work
- EN 1037 specifies built-in safety measures aimed at preventing unexpected machine start-up to allow safe human interventions in danger zones
- Machine Directive 2006/42/EC satisfying the relevant essential Health and Safety requirements (risk assessment and safety integration)

PROFESSIONAL LOCKOUT SERVICES

Our team has years of experience writing lockout programs and procedures.

We help companies across all industries to meet or surpass local standards LOTO requirements by visiting your site and implementing the right lockout program.

To request a visit at your site from our safety experts, **contact us at safetyeu@mlock.com**

Master Lock®

