



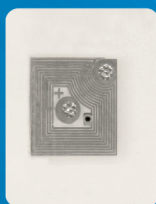
With electronic identification labels, equipment can be identified instantly and error free.

HF RFID (High Frequency Radio Frequency Identification) and barcode labels can be utilized to collect audit trail data during a lockout tagout procedure or equipment inspection.

What are HF RFID Labels?



FRONT



BACK

HF RFID labels feature an HF RFID inlay programmed with a unique 16-digit code. Codes cannot be duplicated, ensuring labels track equipment specific information in your facility. Durable polyester construction protects inlay from extreme environments. Designed and tested to adhere to either plastic or plastic/metal surfaces. Read range of approximately 1-inch*.

What are Barcode Labels?

Barcode labels feature a 2-D barcode graphic with a printed alphanumeric code. Durable polyester construction resists extreme environments and adheres to either plastic or metal surfaces. Labels scan using a barcode reader, smart phone or tablet.

How Does it Work?

HF RFID or Barcode labels can be applied to procedure signs, isolation points or equipment for scanning during an inspection or lockout tagout procedure. Workers can scan the labels using an HF RFID reader, NFC enabled tablet or smart phone to identify the equipment scanned.



*Read ranges may differ by type of reader used and environment.

How Do These Labels This Work with Field ID Safety Compliance Software?



Field ID allows users to create custom lockout procedures or equipment inspections, and assign to authorized employees. Step by step lockout procedures are followed via mobile device or tablet. Real time data is captured for audit trail purposes that indicate when the procedure was completed, where and by whom. HF RFID and barcode labels can be added to a procedure sign, isolation point or piece of equipment for scanning during a procedure. This ensures the user is in the correct location and is locking out or inspecting the correct piece of equipment.

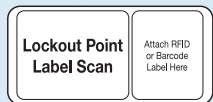
MODEL	S150	S151	S152
Tag Type:	Barcode	HF RFID + Barcode	HF RFID + Barcode
Label Material:	Polyester	Polyester	Polyester
Application To:	Plastic/Metal	Plastic	Plastic/Metal
Label Thickness:	.002" (.051mm)	.002" (.051mm)	.002" (.051mm)
Label Size:	1.20" x .96" (3.05cm x 2.44cm)	1.20" x .96" (3.05cm x 2.44cm)	1.20" x .96" (3.05cm x 2.44cm)
Barcode Symbology:	2-D	2-D	2-D
RFID Operating Frequency:	—	13.56 Mhz	13.56 Mhz
RFID Read Range:	—	.00" – 1.00"* (0cm - 2.54cm)	.00" – 1.00"* (0cm - 2.54cm)
Chemical Resistance:	Silicone Oils, Hexane, Solvents, Bleaches, Dilute Acetic Acid and Naphtha		
Adhesive Type:	Pressure Sensitive Adhesive		
Adhesive Material:	MC78	MC78	3M VHB
Application Temperature:	+45° F (7.2° C)	+45° F (7.2° C)	+45° F (7.2° C)
Storage Temperature:	68°F (20° C), 50 % RH	68°F (20° C), 50 % RH	68°F (20° C), 50 % RH
Shelf Life:	2 years	2 years	2 years
Each:	1/Bag, 100/Labels	1/Bag, 25/Labels	1/Bag, 25/Labels
UPC - Each:	071649218835	071649218972	071649219184
Master Carton:	3/Bags, 100 Labels/Bag	3/Bags, 25 Labels/Bag	3/Bags, 25 Labels/Bag
UPC - Master Carton:	10071649218832	10071649218979	10071649219181

*Read ranges may differ by type of reader used and environment.

Additional Products

Lockout Point ID Tags

- For for both indoor & outdoor use
- Guardian Extreme™ process fuses graphics into rugged industrial grade polypropylene
- Chemical resistance to over 30 chemicals
- Use with barcode and HF RFID labels



410 Locks

- Exclusively for Lockout/Tagout applications
- Durable, lightweight, non-conductive Thermoplastic body
- Compliance with "one employee, one lock, one key" mantra



Lockout Isolation ID Tags

- For both indoor & outdoor use
- Chemical resistance to over 30 chemicals
- Control panel, electrical, gas, pneumatic, steam, valve & water

