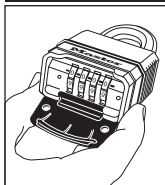
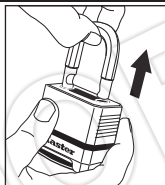


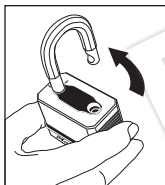
TO OPEN FOR THE FIRST TIME



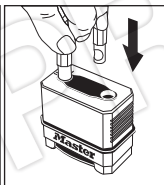
1. Enter the preset combination located at the top of this sheet.



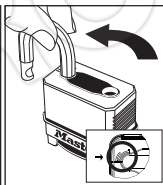
2. Pull shackle open.



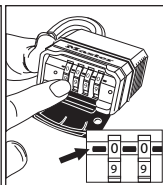
1. OPEN lock and
TURN shackle 90°.



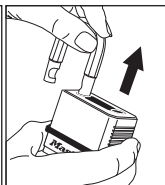
2. PUSH shackle in to
lock until it "clicks."



3. TURN shackle
another 90°.



4. SET dials at black
indicator line to
desired combination.



5. PULL shackle UP.
VERIFY dials
remained set to
your combination
before locking.

TO LOCK: Close the shackle and **SCRAMBLE THE DIALS.**

TO REOPEN: DIAL your combination and PULL shackle.

TO USE IN LOW LIGHT CONDITIONS

NEW blind dial feature: Rotate dials up until they stop at zero. Next, slowly rotate each dial down while counting the clicks as you dial your combination. Ideal for low light conditions.