



2894AT Installation Instructions Cargo Carrier

Tools Needed:

Pliers, Philips Screw
Driver, Adjustable
Wrench

Hardware Included



1 -M8 x 60 bolt



1 -M8 locknut



4 -M6 x 40 bolt



8 -M6 locknut



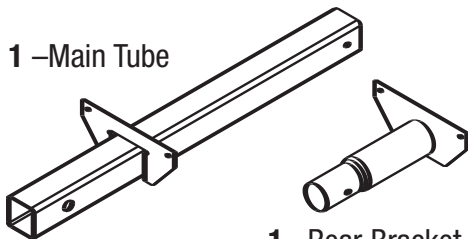
20 -M4 Screw



4 -M6 x 35 bolt

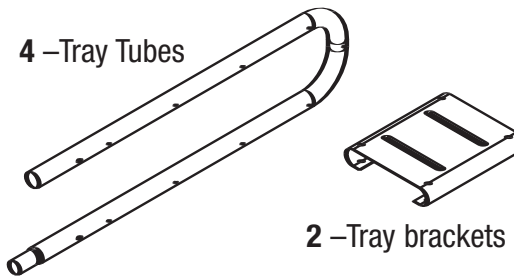
Components

1 -Main Tube



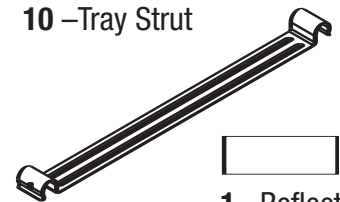
1 -Rear Bracket

4 -Tray Tubes



2 -Tray brackets

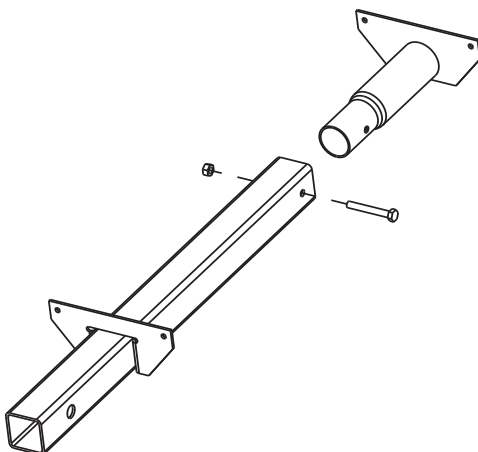
10 -Tray Strut



1 -Reflector

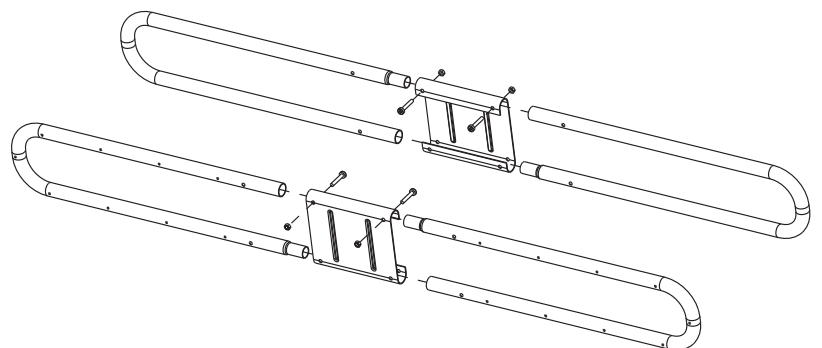
STEP 1

Insert rear bracket into the main
tube and bolt into place.
Use M8 bolt and locknut.



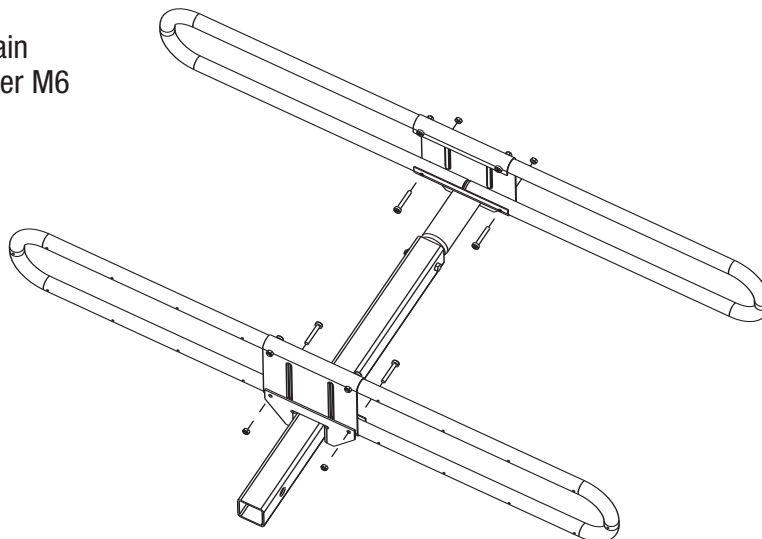
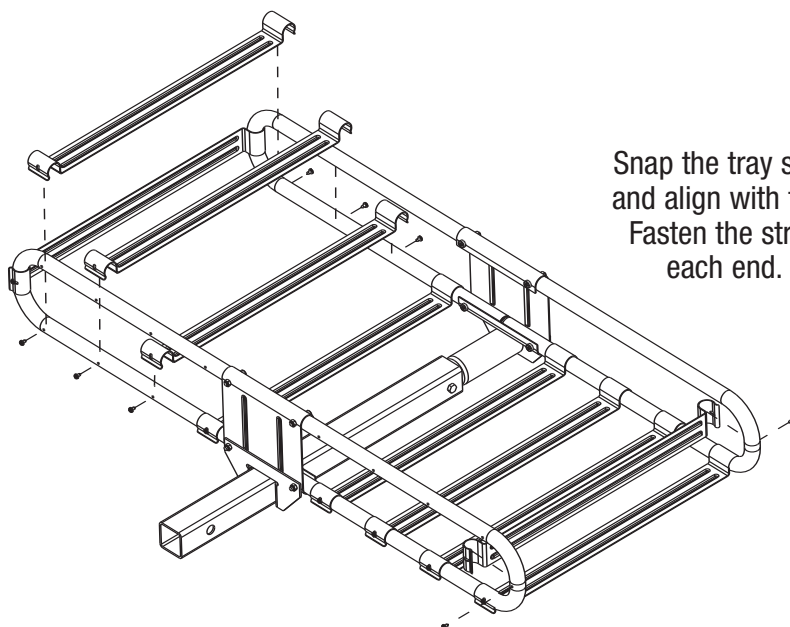
STEP 2

Insert the tray tubes into the tray brackets. Bolt
into place as shown using the top hole of the
tray brackets. Use the shorter M6 bolts and
locknuts, 4 each.



STEP
3

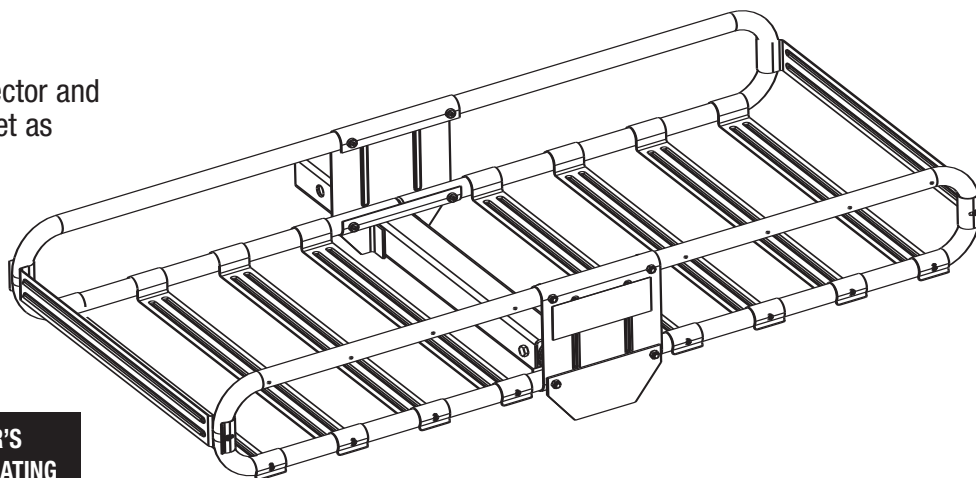
Bolt tray frames onto the main tube assembly. Use the longer M6 bolts and locknuts, 4 each.

**STEP**
4

Snap the tray struts over the tubes and align with the holes as shown. Fasten the struts with a screw on each end. Use the M4 screws.

STEP
5

Peel the backing from the reflector and position on the rear tray bracket as shown.



**DO NOT EXCEED VEHICLE MANUFACTURER'S
TONGUE WEIGHT RATING OR HITCH TONGUE RATING**



www.masterlock.com

Master Lock Company LLC, Milwaukee, WI 53154 U.S.A. | 800-308-9244
Master Lock Canada, Oakville, Ontario L6H 5S7 Canada | 800-227-9599
© 2007 Master Lock Company | All Rights Reserved

**Master
Lock**