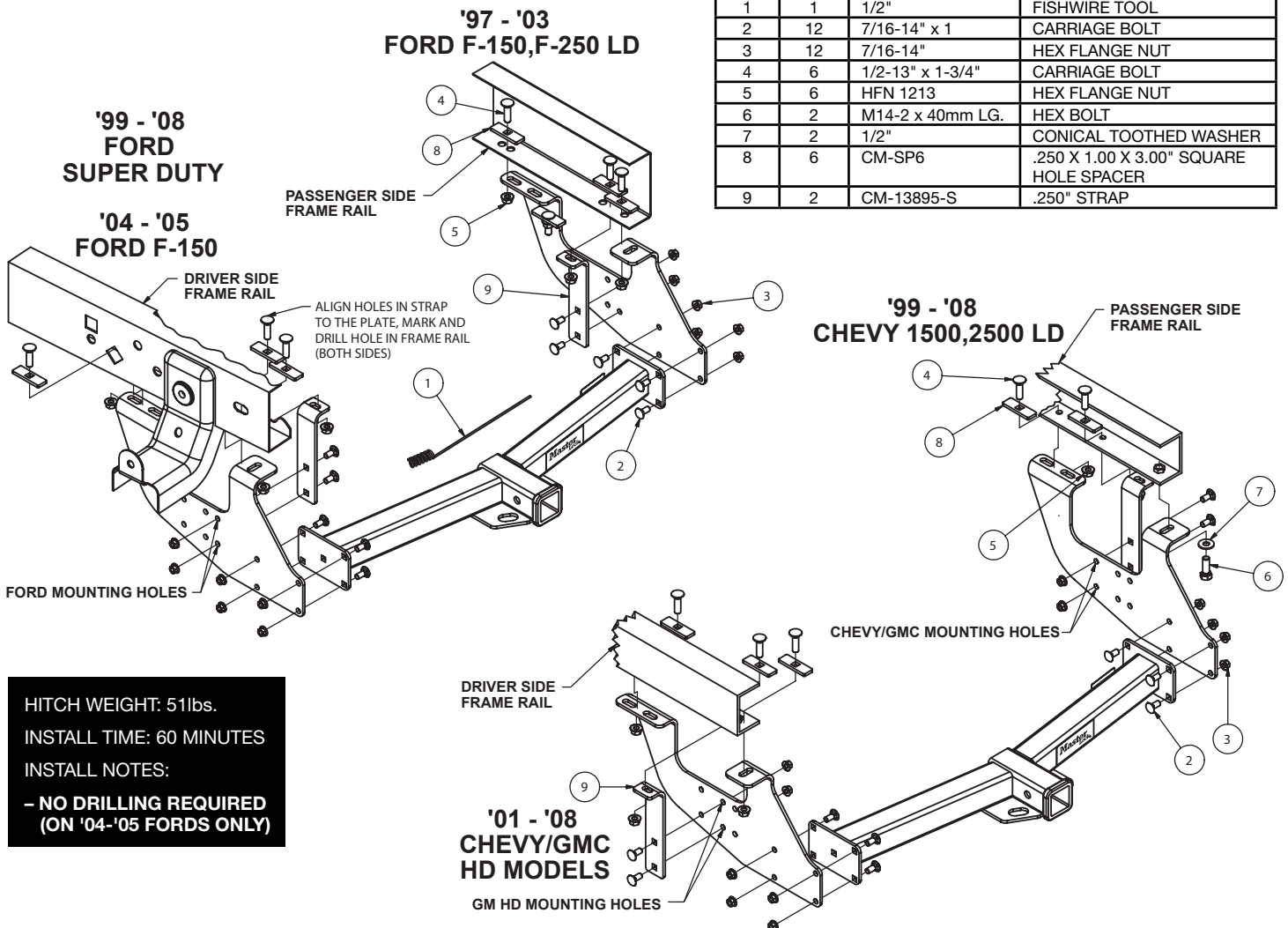


3818AT Installation Instructions

GROSS LOAD CAPACITY WHEN USED AS A WEIGHT CARRYING HITCH: 5,000lbs. TRAILER WEIGHT & 500lbs. TONGUE WEIGHT.
GROSS LOAD CAPACITY WHEN USED AS A WEIGHT DISTRIBUTION HITCH: 10,000lbs. TRAILER WEIGHT & 1,000lbs. TONGUE WEIGHT
*****DO NOT EXCEED VEHICLE MANUFACTURER'S RECOMMENDED TOWING CAPACITY.*****

Parts List			
ITEM	QTY	PART NUMBER	DESCRIPTION
1	1	1/2"	FISHWIRE TOOL
2	12	7/16-14" x 1	CARRIAGE BOLT
3	12	7/16-14"	HEX FLANGE NUT
4	6	1/2-13" x 1-3/4"	CARRIAGE BOLT
5	6	HFN 1213	HEX FLANGE NUT
6	2	M14-2 x 40mm LG.	HEX BOLT
7	2	1/2"	CONICAL TOOTHED WASHER
8	6	CM-SP6	.250 X 1.00 X 3.00" SQUARE HOLE SPACER
9	2	CM-13895-S	.250" STRAP



INSTALLATION STEPS

- 1) Place supplied fasteners into position on vehicle where where possible without drilling, per application.
- 2) Mount side plates to frame rails as shown above (Ford in, Chevy/GMC out). Raise center section into position and loosely secure to side plates.
- 3) Drill remaining holes if neccessary. ('03-'04 ford trucks)
- 4) Install remaining fasteners.
- 5) Torque all 7/16" fasteners to 50lb-ft, all 1/2" fasteners to 75lb-ft, and all 14mm fasteners to 94lb-ft.

PERIODICALLY CHECK THIS RECEIVER HITCH TO ENSURE THAT ALL FASTENERS ARE TIGHT AND THAT ALL STRUCTURAL COMPONENTS ARE SOUND.

FOR INSTALLATION ASSISTANCE OR TECHNICAL HELP CALL 1-800-655-1662



www.masterlock.com

Master Lock Company LLC, Milwaukee, WI 53154 U.S.A. | 800-308-9244
Master Lock Canada, Oakville, Ontario L6H 5S7 Canada | 800-227-9599
© 2007 Master Lock Company | All Rights Reserved