



Preset Combination:
Préréglage de combinaison :
Combinación preestablecida:

HOW TO OPEN

1. Push the cable firmly toward the lock body **TWICE** and release to “clear” the lock each time before opening it.
2. Enter the preset combination by sliding the button to each position in the combination pattern.
NOTE: Be sure to slide the button all the way in each direction, guiding the button back to the center position before moving to the next position.
3. Pull up on the cable to open the lock.
4. To close the lock, insert the cable and push firmly.

IMPORTANT: ALWAYS REPEAT STEP 1 EACH TIME YOU OPEN THE LOCK!



HOW TO CHANGE THE COMBINATION

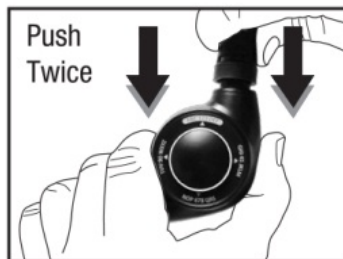
You can set your combination to any pattern of any length. **FOLLOW INSTRUCTIONS EXACTLY!**



1. Open Lock.



2. On the back of the lock, use a pointed object to slide the reset lever into the “R” position.



3. **IMPORTANT: INSERT THE CABLE INTO THE LOCK AND PUSH FIRMLY TWICE TO “CLEAR” IT**



4. Pull out the cable to open the lock.



5. Enter your new combination.



6. Slide the reset lever back to the “down” position.



7. Insert the cable into the lock and push firmly.



8. The lock will now open with your new combination. Remember to push the cable firmly toward the lock **TWICE** each time before opening.

9. Store your combination at masterlockvault.com

To reset the combination again, repeat steps 1 – 9.