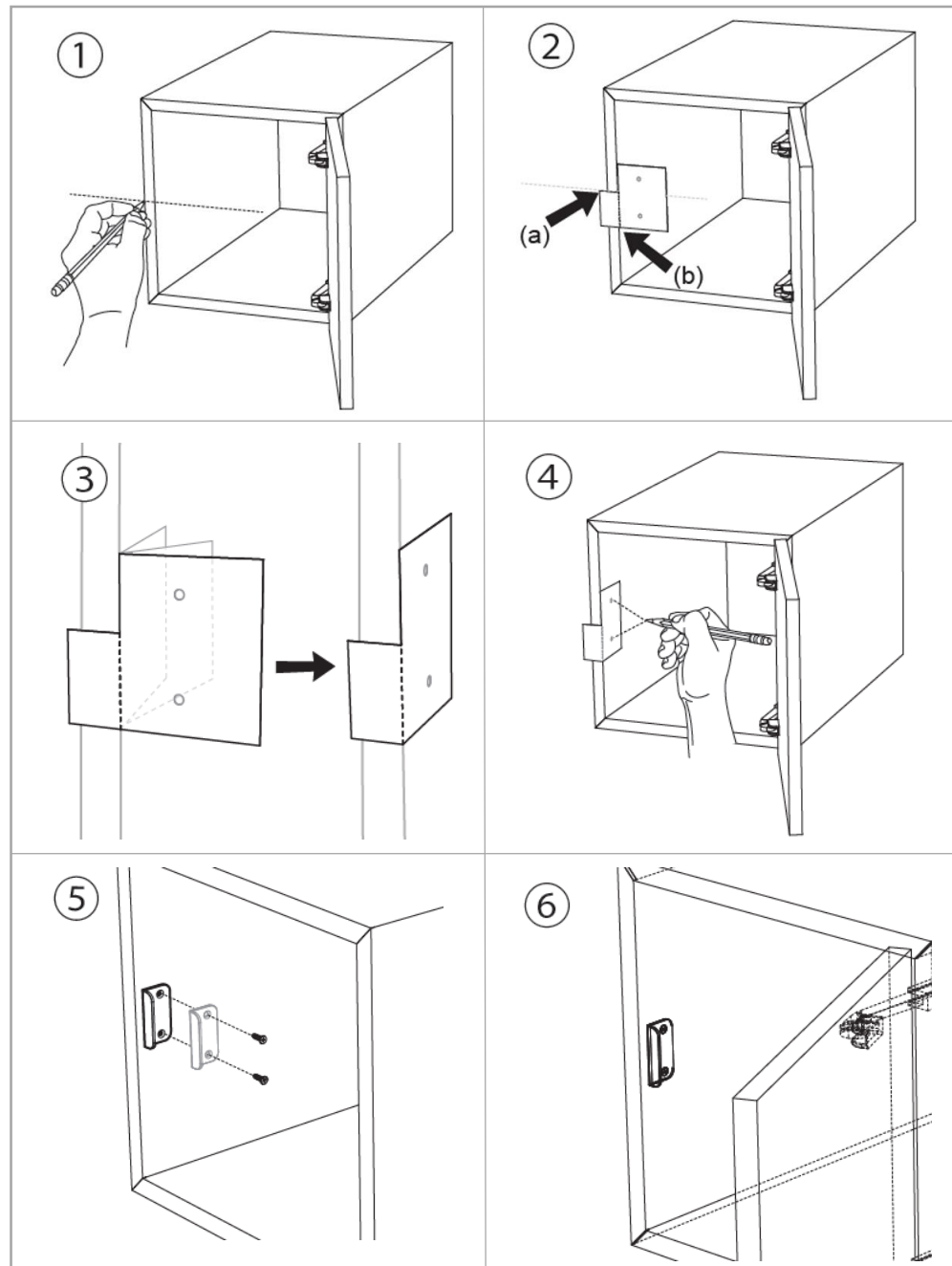


3685 & 3681 Electronic Built-In Locker Lock

Strike Plate Mounting Instructions

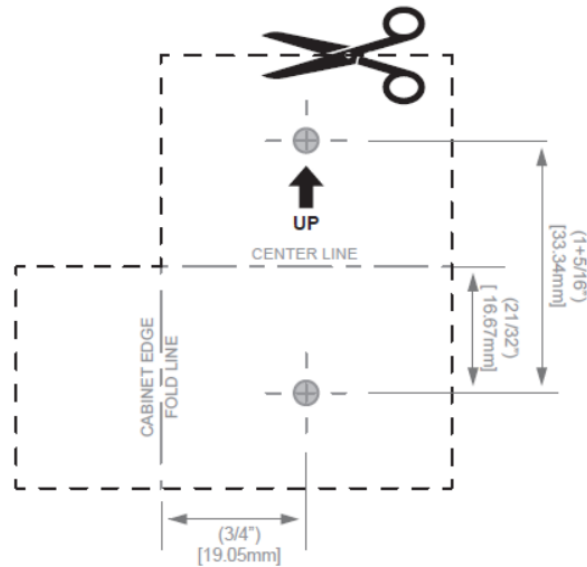
1. Locate center line of inside locker.
2. Place mounting template on locker sidewall & align center line of template with center line of locker (a), keeping dotted line of template on locker wall edge (b).
3. Fold template on dotted line using the edge of the locker wall.
4. Mark hole placement for strike screws.
5. Screw strike to locker wall using provided screws.
6. You have successfully mounted the strike.



3685 & 3681 Electronic Built-In Locker Lock

Strike Plate Template

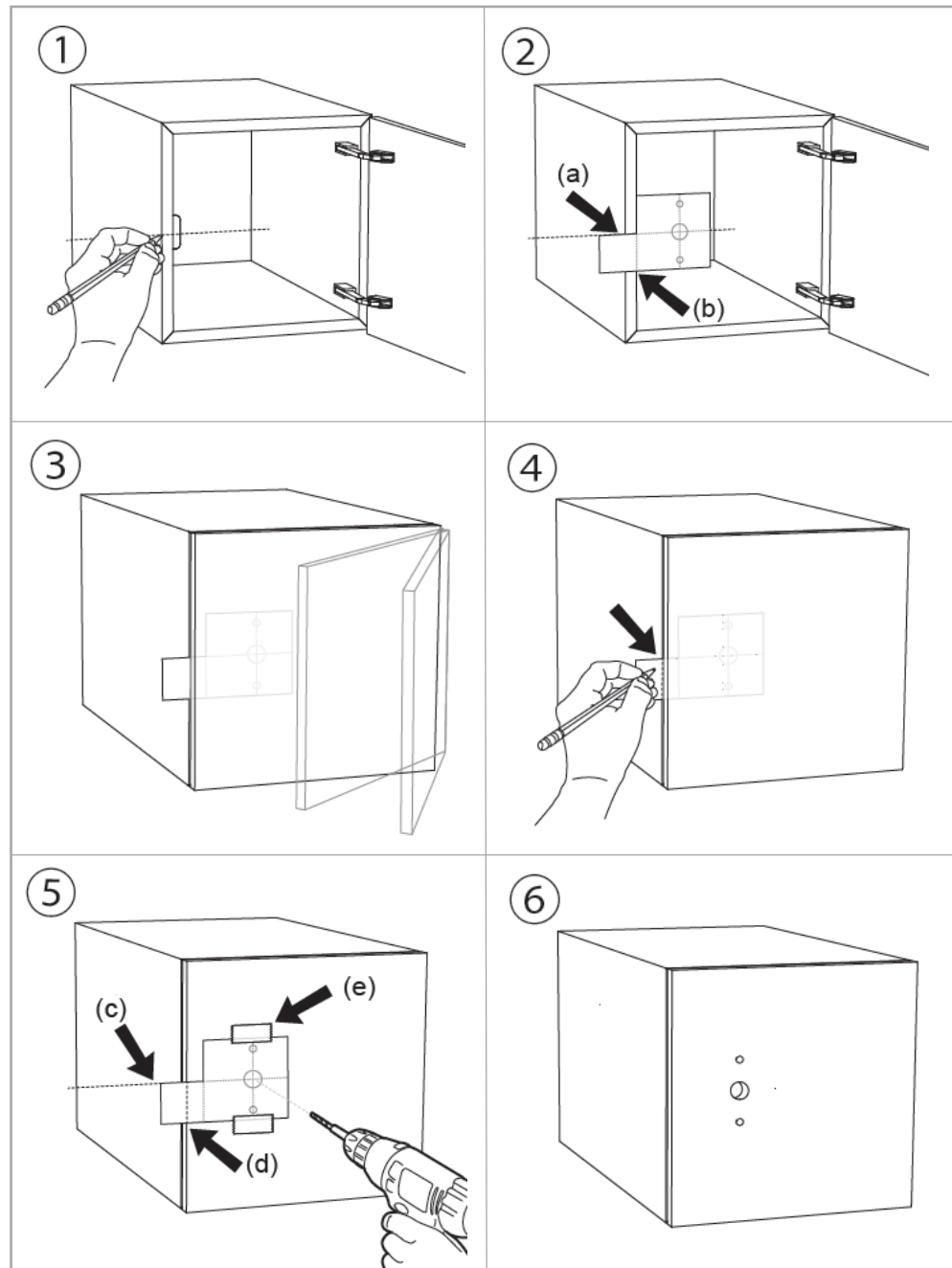
Template is to scale and can be used if printed at 100%.



3681 & 3685 Electronic Built-In Locker Lock

Lock Mounting Instructions

1. Locate center line of inside locker.
2. Place mounting template on locker sidewall & align center line of template with center line of locker (a), keeping dotted line of template on locker wall edge (b).
3. Keeping template in place, close locker door.
4. Mark edge of closed locker door on template.
5. Move mounting template to front of locker door & align center line of template with center line of locker (c), keeping the drawn line (d) in line with the door edge. Tape template in place & drill holes with proper bit sizes.
6. Door is ready to accept the electronic locker lock.

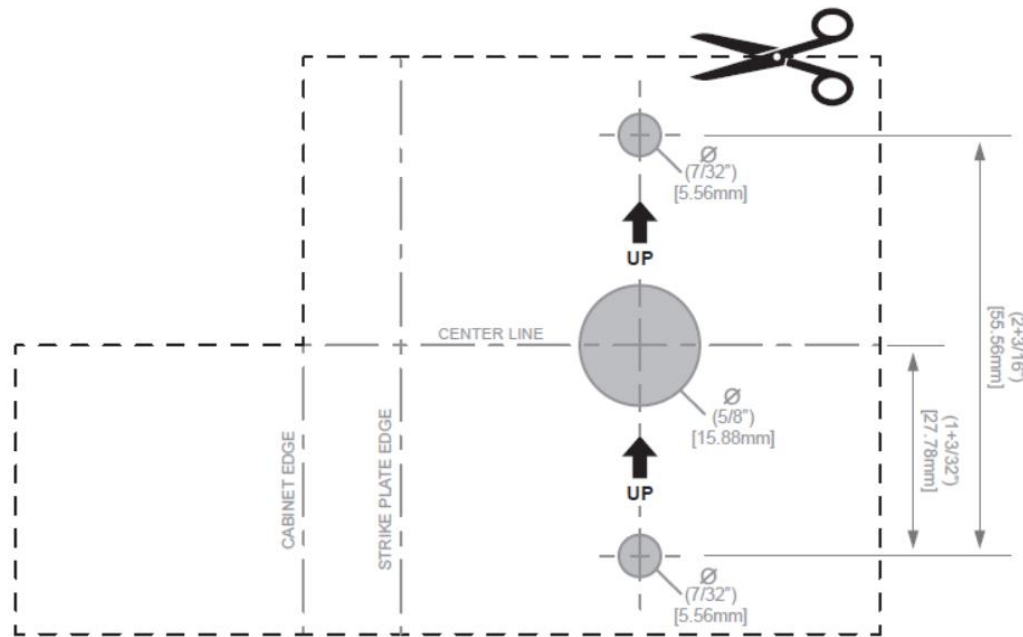


3685 & 3681 Electronic Built-In Locker Lock

Lock Mounting Template

Mounting template follows standard TMLC 3-hole pattern for ease of installation

Template is to scale and can be used if printed at 100%.



3685 & 3681 Electronic Built-In Locker Lock

Critical Installation Dimensions

