

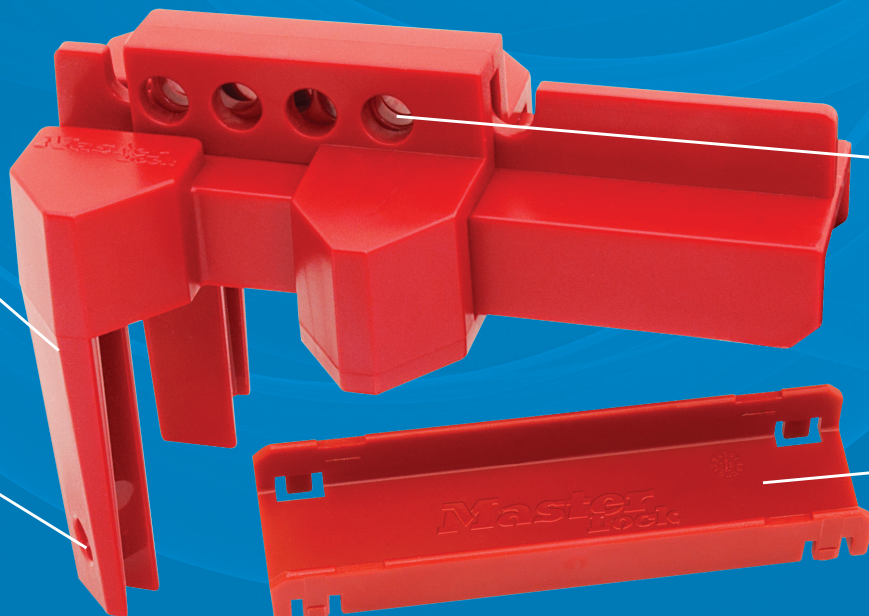
Easy-to-Use, Adjustable Design Prevents Accidental Activation of a Closed Ball Valve

Durable, lightweight thermoplastic material is chemical resistant and performs effectively in extreme environments

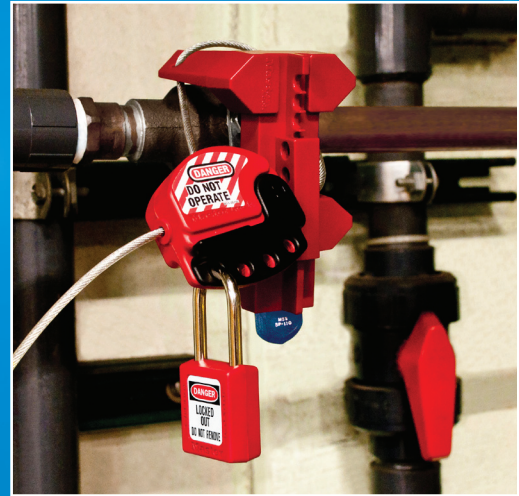
Four locking holes are compatible with all Master Lock® and American Lock® safety padlocks

Loop S806 cable lockout device through the leg openings for the most secure fit

Includes a removable insert to accommodate a wide range of handle designs and dimensions



Product Number	S3081
Description	Adjustable Ball Valve Lockout
Valve Size	1/2 in. to 2 in. (12.7mm to 50.8mm)
Weight	0.30 lbs (134.5g)
Product Dimensions	3.03 in. W x 4.1 in. H x 5.3 in. L (76.9mm W x 104.1mm H x 134.6mm L)
Material Used	Polycarbonate and PBT
Color	Red
Temperature Range	-40°F to 200° F
Chemical Resistance	Resistant to common industrial chemicals including methylene chloride, sodium hypochlorate, polydimethylsiloxane, sodium metasilicate, diethyl ether, acetic acid, methanol, n-hexane, naphtha, toluene
Locking Feature	Secure with padlock or with S806 cable lockout for most secure fit
UV Resistance	UL 746C - F2
Compliance	REACH
UPC	071649184932
Packaging	Commercial Bagged
Master Carton Quantity	6



S3081 secured with S806 cable lockout device

SEE HOW IT WORKS!

Scan this QR code



More Ball Valve Lockouts from Master Lock

S3476 / S3477



- S3476 fits valve handles 1/4 in. to 1 in. (6.35mm to 25mm)
- S3477 fits valve handles 1-1/4 in. to 3 in. (32mm to 76mm)
- Two rows of lockout points allow for a secure fit
- Heat resistant powder coated metal body

S3068



- Fits valves 1/4 in. to 4 in. (6.3mm to 101.6mm)
- Metal construction withstands temperature extremes and corrosive environments
- Compact for easy storage and carrying
- Works in tight clearance areas

468L



- Fits valves 3/8 in. to 4 in. (9.5mm to 101.6mm)
- Valve handle removal makes accidental reactivation virtually impossible
- Easy to identify amongst piping