



Easy-to-Use, Adjustable Design Prevents Accidental Activation of Butterfly Valves

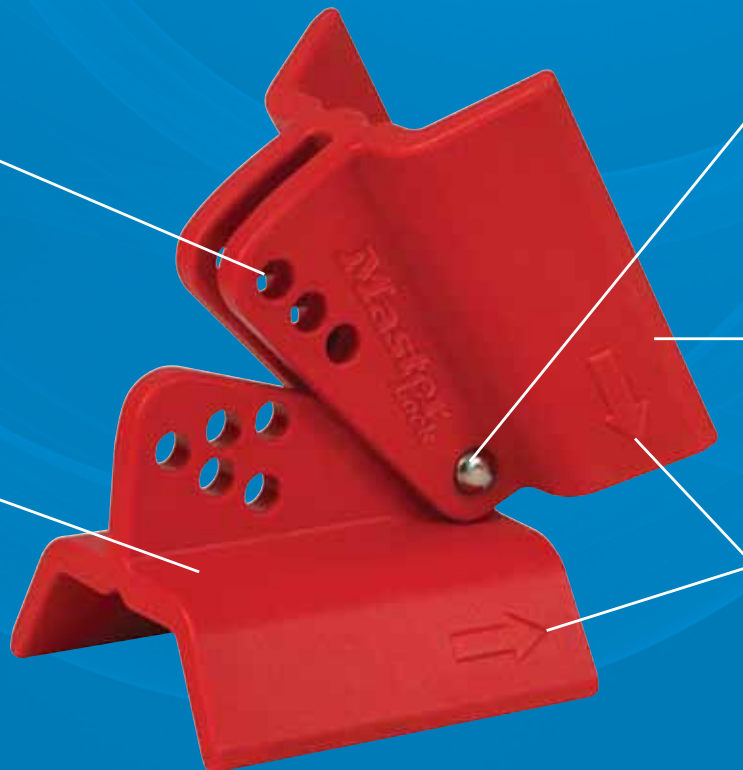
Locks out valve in seconds by feeding S806 cable lockout device through desired eyelet and around valve neck

Stainless steel rivet allows device to smoothly pivot open and closed to ensure proper fit

Durable, lightweight thermoplastic material is chemical resistant and performs effectively in extreme environments

Adjustable design; fits virtually all butterfly valves

Directional application arrows allow for ease of installation and minimize user error



Product Number	S3920
Description	Butterfly Valve Lockout (Device Only)
Weight	0.10lbs (45.3g)
Product Dimensions	1.32in (33.5mm) H (closed position) 1.80in (45.7mm) H (open position) 1.72in (43.7mm) W (max handle width)
Material Used	Body: PBT and PC Thermoplastic Rivet: Stainless Steel
Color	Red
Temperature Range	-40° F to 200° F (-40° C to 93° C)
Locking Feature	S806CBL3, 5/32in diameter cable
Chemical Resistance	Resistant to silicone oils, hexane, solvents, bleaches, dilute acetic acid and naphtha
Corrosion Resistance	ASTM F883-09 Section 11.3, Grade 6 Weathering-Corrosion Test
UPC - Individual	071649198434
Individual Packaging	1 Unit, Bagged
UPC - Master Carton	10071649198431
Master Carton Quantity	24
Country of Origin	Assembled in Mexico of US components



S3920 secure with S806 cable lockout device

SEE HOW IT WORKS!

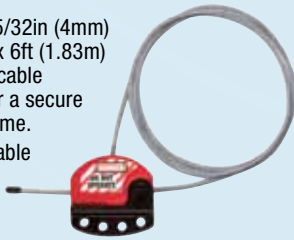
Scan this QR code



Additional Products

S806

- Patented 5/32in (4mm) diameter x 6ft (1.83m) pull-tight cable adjusts for a secure fit every time.
- Also available from 2 to 50 foot (61cm to 15.2m) long
- Tough, flexible multi-stranded steel cable is insulated with a clear plastic coating (PVC free)
- Tough, lightweight thermoplastic body withstands chemicals



410

- 1-1/2in (3.8cm) wide 1-3/4in (4.4cm) tall Thermoplastic body, shackle with 1-1/2in (3.8cm) clearance
- Designed exclusively for Lockout/Tagout applications
- Durable, lightweight, non-conductive Thermoplastic lock body
- Compliance with OSHA "one employee, one lock, one key" directive
- 8 color options



S3921

- Fits virtually all butterfly valves
- Includes (1) S3920 – Butterfly Valve Lockout Device and (1) S806CBL3 – 3 foot cable lockout device
- Constructed from tough, lightweight thermoplastic; withstands temperature and extreme environments
- Compact design allows device to be applied in areas with restricted space

