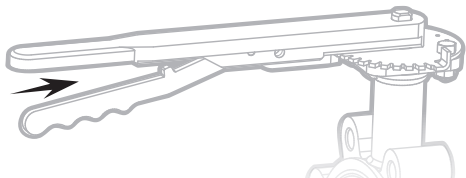


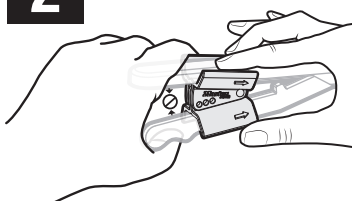
# S3920 / S3921

# Master Lock.

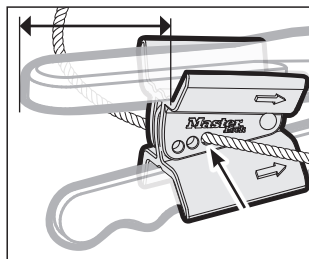
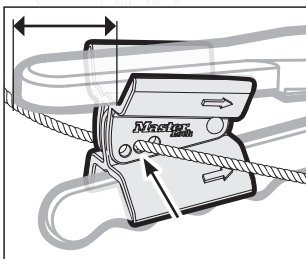
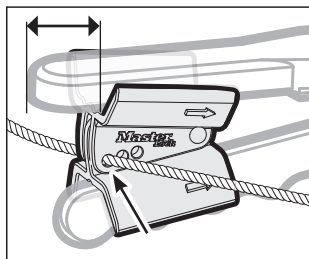
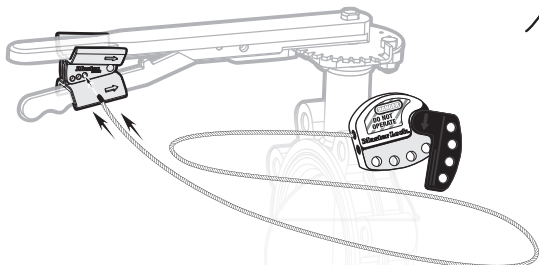
1



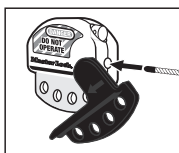
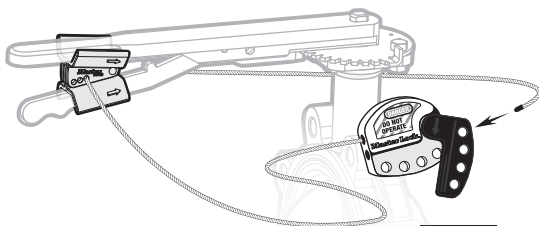
2



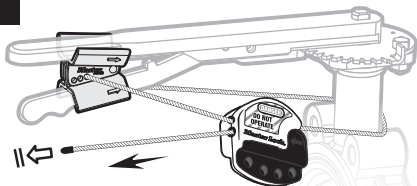
3



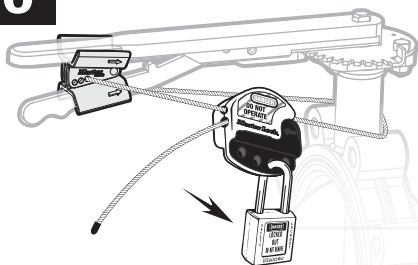
4



5



6



[www.masterlocksafety.com](http://www.masterlocksafety.com) • [www.masterlock.com](http://www.masterlock.com)

© 2013 Master Lock Company LLC | All Rights Reserved

Master Lock Company LLC, Milwaukee, WI 53210 U.S.A. | 800-308-9244

Master Lock Canada, Oakville, Ontario L6H 5S7 Canada | 800-227-9599

Master Lock Europe S.A.S; 0033.1.41.43.72.00; E-mail: [safety@master-lock.fr](mailto:safety@master-lock.fr)

Master Lock Europe-UK Office, Wakes Colne, Colchester CO6 2DB, UK, 0044.1.787.222.027, E-mail: [safetyeu@mlock.com](mailto:safetyeu@mlock.com)

玛斯特锁贸易(上海)有限公司 上海市浦东新区银城中路168号上海银行大厦1006室 400-820-6535 E-mail: [safetychina@mlock.com](mailto:safetychina@mlock.com)

P25010