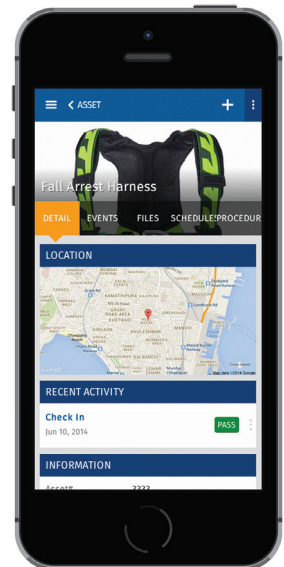
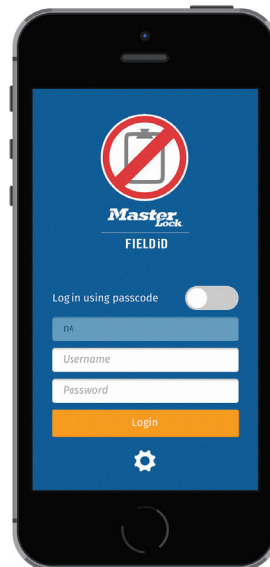
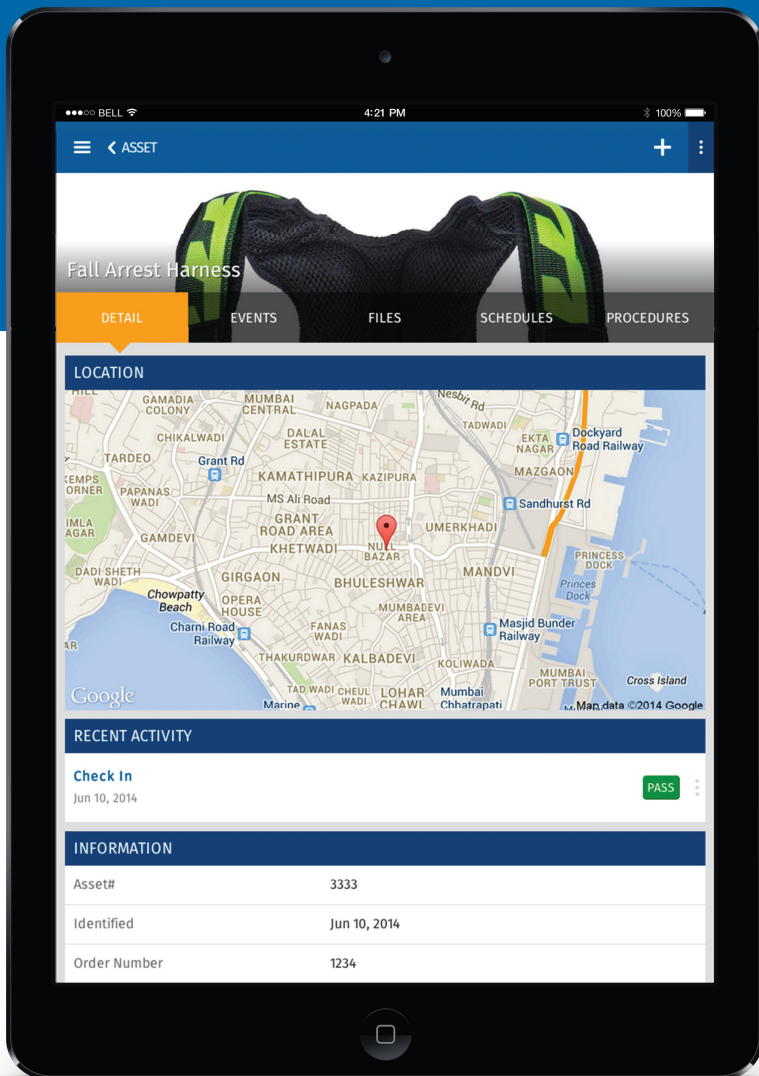
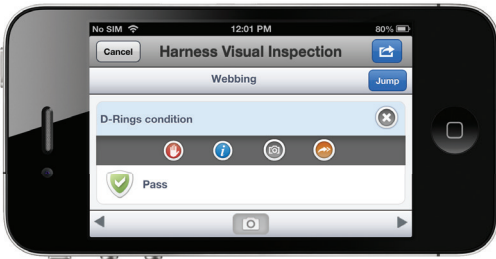


FIELD iD IS THE LEADING MOBILE AND WEB-BASED SAFETY COMPLIANCE SOFTWARE. EASY TO USE, INCREDIBLY POWERFUL AND HIGHLY CUSTOMIZABLE TO YOUR SAFETY NEEDS.

ELIMINATE PAPERWORK & DATA ENTRY  
IMPROVE EFFICIENCY & COMPLIANCE  
INCREASE WORKPLACE SAFETY



# Digitize safety with mobile devices to eliminate paperwork and improve efficiency



## CLOUD-BASED

Cloud-based software eliminates inspection and audit paperwork while providing real-time visibility into your safety program

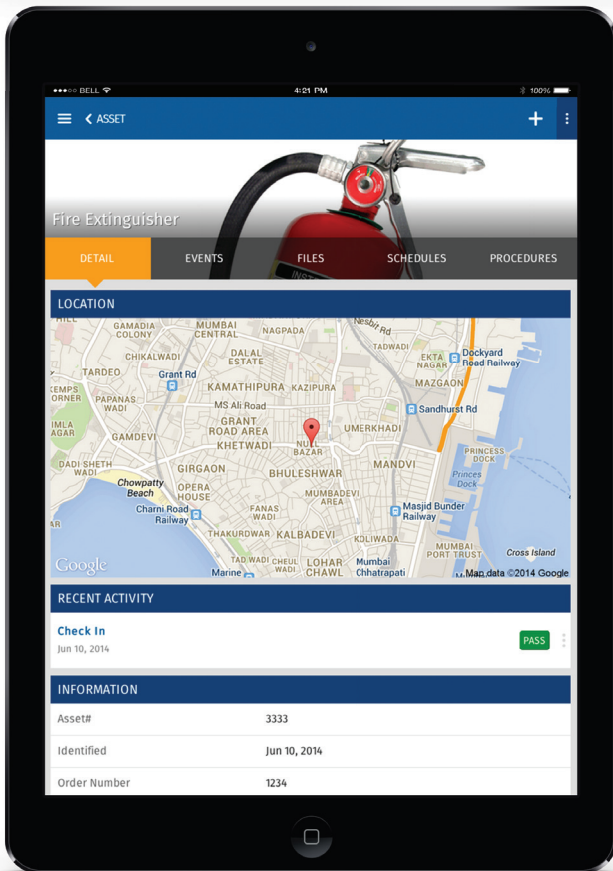


## FULLY-CUSTOMIZABLE INSPECTIONS AND AUDITS

Conduct virtually any audits and inspections more securely and efficiently by syncing with the cloud as you work

## WORK ONLINE & OFFLINE

Record inspections, audits & QC/QA events both online or offline



## PICTURES & NOTES

Capture asset images, deficiencies and details with mobile devices, and attach comments for your safety records

## CORRECTIVE ACTIONS

Assign and track corrective actions with scheduling and notifications

## SCHEDULING

Keep track of when an inspection, audit or procedure is due, and address overdue events easily within minutes

## GPS

With Field iD's GPS capabilities, you can see exactly where and when an inspection or audit was performed

## RFID, BARCODES & ASSET MANAGEMENT

Scan RFID or barcodes to quickly identify an asset, access safety information and equipment locations, or start safety events

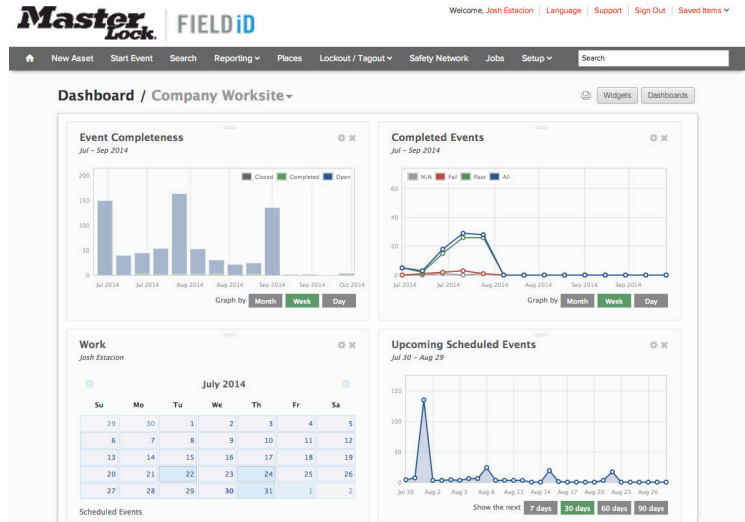
# Access safety data in real-time with fully customizable cloud-based software

## THE SAFETY DASHBOARD

See your completed or upcoming safety events and insights from one customizable dashboard as soon as you log in

## REPORTING & TRENDING

Produce instant safety and compliance reports using simple search and print functionality or customize your data to discover trends



## LOCKOUT/TAGOUT MODULE

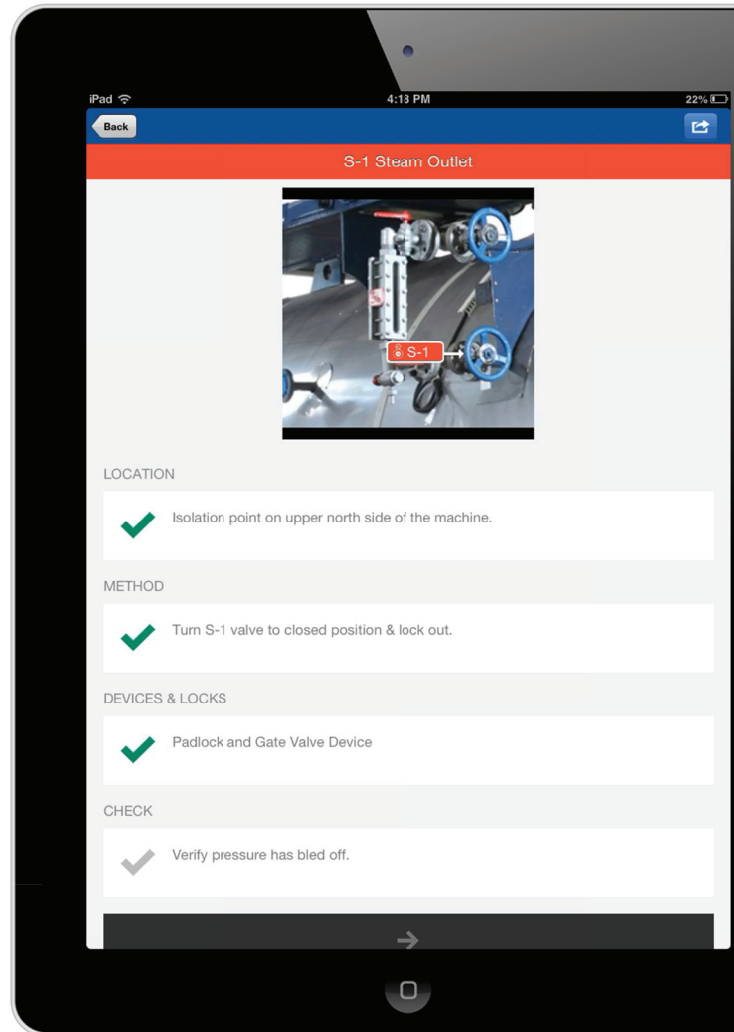
Use Field iD's lockout/tagout module to create and revise LOTO procedures, or print your procedure sheets from the web

LOCKOUT PROCEDURE		Developed By	Reviewed By	Revised By	Revisions
K-14-000143-4		Raymond C. Cook	Raymond C. Cook	Raymond C. Cook	3
TYPE: Boiler		EQUIPMENT NUMBER: 14-000143		LOCKOUT POINTS	
LOCATION: Area 1		BUILDING: B Wing		DEVICES	
<b>CAUTION</b>		4		3	
Only shut down Equipment 14-000143 when 14-00141 is fully operational. Shutting down both will affect facility operators.					
<b>PROCEDURE APPLICATION PROCESS</b>					
1. Notify affected personnel; 2. Properly shut down machine; 3. Isolate all energy sources; 4. Apply lockout devices, locks, and tags; 5. Verify total de-energization of all sources.					
<b>LOCKOUT STEPS</b>					
Identifier	Source	Device	Location	Method	Check
W-1	Water	Ball Valve Cover and Padlock	South Boiler	Turn valve to closed position. Lock out.	Verify zero pressure status.
N-1	Notes			Obtain a ladder from the Item Safety area beside the east doors. Ladders are hanging on the shadow board.	
E-1	Electrical	Electrical Lockout Plug and Padlock	South Boiler	Move electrical disconnect to off position. Lock out.	Attempt to restart.
S-1	Steam	Ball Valve Cover and Safety Padlock	South Boiler	Turn valve to release pressure, apply ball valve cover and padlock.	Verify zero pressure status.
<b>REMOVAL PROCESS</b>					
1. Ensure all tools and items have been removed; 2. Confirm that all employees are safely located; 3. Verify that controls are in neutral; 4. Remove lockout devices and reenergize machine; 5. Notify affected employees that servicing is completed.					

Master Lock | FIELD iD  
NEXT UPDATE DATE: 2015/01/20 09:00 AM 07/13/2014

Complete LOTO events in the field with smartphones and tablets

Ensure LOTO events are completed on schedule and in proper sequence



WITH FIELD iD, YOU NEVER HAVE TO WORRY ABOUT COSTLY UPDATES OR I.T. HASSLES. WE HANDLE THE TECH FOR YOU.

## USE FIELD iD FOR:

### SAFETY AUDITS AND QA/QC

at facilities, job sites, warehouses, manufacturing plants, distribution centers, labs, mines & more!

### INSPECTIONS

for scaffolding, fall protection, PPE, respiratory protection, fire extinguishers, fire doors, slings, forklifts, oil rigs, heavy machinery & guarding, cranes, vehicles - to name a few!

### LOCKOUT/TAGOUT & MORE

procedures such as lockout/tagout, crew observations, pull/proof tests, training and certifications!

## YOUR DATA IS OUR #1 PRIORITY

Nightly backups  
Two offsite data centers  
Data redundancy  
256BIT SSL encryption  
Export your data on-demand

## DEDICATED CUSTOMER SUPPORT

Telephone support  
Help documentation  
Instructional videos  
Guided implementation to ensure Field iD works for you

## THE TECH & HARDWARE

Cloud-based, only a browser and Internet connection is needed  
Work online or offline on the mobile version  
NFC, RFID & barcode require compatible hardware

## LEADING COMPANIES USE FIELD iD



## WANT TO SEE MORE?

Contact us today for a FREE customized web demo or visit [www.masterlockfieldid.com](http://www.masterlockfieldid.com) for detailed video demos showing Field iD features in action!

[www.masterlockfieldid.com](http://www.masterlockfieldid.com) [sales@fieldid.com](mailto:sales@fieldid.com) 1.800.996.4797 [twitter.com/fieldid](https://twitter.com/fieldid) [facebook.com/fieldid](https://facebook.com/fieldid)

Master Lock Company, 111 Queen Street East, Suite 240, Toronto, ON, Canada M5C1S6  
© 2014 Master Lock Company LLC. All trademarks are the property of their respective owners.