



## 1653MD

Built-In Combination Lock with Metal Dial  
for Single Point Latch Lockers - Hinged  
on Left



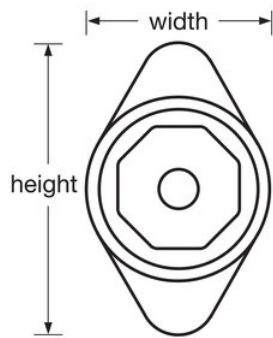
- 
- - 5
- 
- 3
- 
- Customize with optional color metal dials. Choose from Red, Blue, Green, Purple or Black. See catalog for details. (Metal and color dials feature the non-slip dial)
- ADA1651MKADA
- Extension kit available for doors with a thickness of 11/16in (17mm) to 3/4in (19mm)

The Master Lock No. 1653 features the new button-less combination change process technology, along with a new, stylish octagonal dial. With the new technology, the combination is changed with just your control key, from the outside of the locker. These locks boast the longest fully retractable bolt and a springbolt action for convenient, automatic locking. Standard key control used for combination changes and allows quick supervisory access. Customization options are available along with ADA compliant models.

1653MD

48mm

50



---

**Master Lock Europe S.A.S.**

10 avenue de l'arche - Le Colisée Gardens, bâtiment A - 92 400 Courbevoie - La Défense - France

O: +33-1-41437200 | F: +33-1-41437204

[www.masterlock.eu](http://www.masterlock.eu)