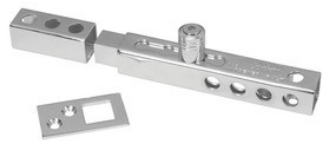


A895

8-1/2in (21.6cm) Long Locking Bolt



- 3/4in (19mm) hardened steel locking bolt with steel throw for maximum strength

-

- Fully adjustable from 3/4in to 2-3/8in (19mm - 60mm)

-

The American Lock No. A895 Steel Throw Locking Bolt features a 3/4in (19mm) hardened steel locking bolt for maximum strength and is full adjustable from 3/4in (19mm) to 2-3/8in (60mm). Bolt is chrome plated for corrosion resistance and the mounting hardware is included for easy installation.

A895

216

11

6

24

Master Lock Europe S.A.S.

10 avenue de l'arche - Le Colisée Gardens, bâtiment A - 92 400 Courbevoie - La Défense - France
O:+33-1-41437200 | F:+33-1-41437204
www.masterlock.eu