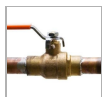
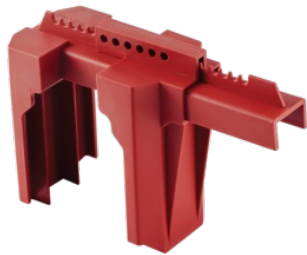


S3079

Adjustable Ball Valve Lockout Device



- Durable, lightweight thermoplastic material is chemical resistant
- Performs effectively in extreme environments
- Locking holes are compatible with all Master Lock safety padlocks
- Adjustable design fits 2in (51mm) to 200mm (7.8in) valves

The Master Lock S3079 is designed to ensure OSHA compliance and peace of mind during lockout involving ball valves. By encompassing the ball valve lever, these easy-to-use, adjustable lockout devices secure against inadvertent valve activation and will enable lockout by multiple workers at each lockout point.

H x W x D

S3079

115mm

218.5 mm x 115 mm x 309
mm

.51 kg

6

Master Lock Europe S.A.S.

10 avenue de l'arche - Le Colisée Gardens, bâtiment A - 92 400 Courbevoie - La Défense - France
O:+33-1-41437200 | F:+33-1-41437204
www.masterlock.eu