



Hover over image to zoom

## MODEL NO. 1593

1-7/8in (48mm) Shrouded General Security Combination Padlock

### BEST USED FOR



Cabinets



Office Environments & Equipment



School, Employee & Athletic Lockers



Storage Lockers

## OVERVIEW & FEATURES

### Product Features

- Shackle shroud helps prevent shackle cutting and shimming
- Letter Lock? - Popular combination lock with easy-to-dial and remember 3-letter combinations
- Easy-to-remember phrase included with each padlock for additional convenience
- Patented BlockGuard® Anti-Shim Technology withstands attempts to violate the latch mechanism
- Includes combination chart to facilitate lock system administration
- 1-7/8in (48mm) wide double-reinforced stainless steel body
- 3/4in (19mm) tall, hardened steel shackle for extra cut resistance
- Optional customized dials, locks sold in groups of combinations, and back case printing - See Catalog for details
- For supervisory key control option, consider 1594

### Product Details

The Master Lock No. 1593 Letter Lock™ shrouded combination padlock use letters instead of numbers for easier combination recall with an easy-to-remember phrase for additional convenience. These locks also include many enhanced security features, like a shackle shroud to prevent shackle cutting or shimming, the exclusive BlockGuard® Anti-Shim technology and a hardened steel shackle. Designed to fit lockers with a padlock eye of at least 5/16in (8mm) diameter, these locks provide multiple customization options to fit your needs.

## PRODUCT SPECIFICATIONS

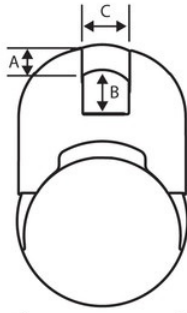
Product Number	1593
Description	Not Keyed, Commercial Boxed Packaging
Master Carton Qty	25

**Body Width**

1-7/8in (48mm)

**Shackle Dimensions**

A: 9/32in (7mm) B: 15/32in (12mm) C: 1/2in (13mm)



Click image to zoom