



Hover over image to zoom

MODEL NO. 1651MKADA

Locker Lock

ADA Compliant Built-In Combination Lock for Single Point Horizontal Latch Lockers - Hinged on Left

BEST USED FOR



ADA Compliant



School, Employee & Health Club

OVERVIEW & FEATURES

Product Features

- Three ways to open patent pending lock; student key for ADA users (opens 1 lock), master key for supervisors and combination
- Designed for standard single point horizontal latch lockers with hinges on the left, like Model 1653 in the 1652 Series
- NEW Patent Pending button-less combination change process for easier, faster combination changes - Longer useful life with 5 different pre-set combinations
- NEW octagonal, stylish dial with larger dial numbers and easy grip (black, plastic dials only)
- ADA Compliant - Meets United States Department of Justice "2010 ADA Standards for Accessible Design" requirements
- Comes with two keys for ADA keyheads; order master keys separately
- Matches the look of other locks in system to mainstream students
- Flexible administration - assign locker for standard combination or ADA keyed use
- Customize with optional color metal dials. Choose from Red, Blue, Green, Purple or Black. See catalog for details. (Metal and color dials feature the non-slip dial)

Product Details

Compliant with ADA Standards, the Master Lock No. 1651MKADA Built-In Combination Lock series is designed for single point horizontal latch lockers and features three ways to open with a student key, master key and combination for use like other combination locks in your system. These locks are designed for special needs students without looking different. As the ADA version for the 1652 series, these locks have five different pre-set combinations for a longer, useful life in your facility.

PRODUCT SPECIFICATIONS

Product Number

1651MKADA

Description

Master Keyed, Keyed Different, Commercial Boxed Packaging

Master Carton Qty

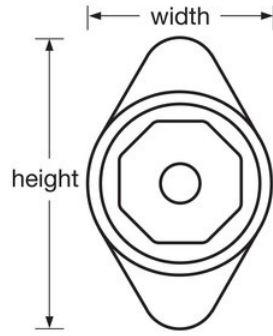
50

Body Width

1-7/8in (48mm)

Color

Black



Click image to zoom