



## Model No. 1652

Built-In Combination Lock for Single Point  
Latch Lockers - Hinged on Right

### Best Used For:



School, Employee &  
Health Club

## Overview & Features

## Product Features

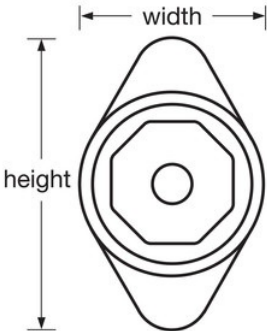
- Designed for standard single point horizontal latch lockers with hinges on the right
- NEW Patent Pending button-less combination change process for easier, faster combination changes - Longer useful life with 5 different pre-set combinations
- NEW octagonal, stylish dial with larger dial numbers and easy grip (black, plastic dials only)
- Springbolt action for convenient, automatic locking
- Secure, easy to dial 3-digit combination
- End user registration and control charts provided to secure and simplify administration
- Customize with optional color metal dials. Choose from Red, Blue, Green, Purple or Black. See catalog for details. (Metal and color dials feature the non-slip dial)
- Use Model 1656MKADA for ADA applications
- Extension kit available for doors with a thickness of 11/16in (17mm) to 3/4in (19mm)

## Product Details

The Master Lock No. 1652 features the new button-less combination change process technology, along with a new, stylish octagonal dial. With the new technology, the combination is changed with just your control key, from the outside of the locker. These locks boast the longest fully retractable bolt and a springbolt action for convenient, automatic locking. Standard key control used for combination changes and allows quick supervisory access. Customization options are available along with ADA compliant models.

Product Specifications

Product Number	1652
Body Width	48mm
Colour	Gray
Description	Control Key, Retail Boxed Packaging
Master Carton Qty	50



Master Lock Europe S.A.S.

10 avenue de l'arche - Le Colisée Gardens, bâtiment A - 92 400 Courbevoie - La Défense - France  
O:+33-1-41437200 | F:+33-1-41437204  
[www.masterlock.eu](http://www.masterlock.eu)