



## Model No. 1652MDBLU

Built-In Combination Lock for with Blue Metal Dial Single Point Latch Lockers - Hinged on Right

**Best Used For:**



School, Employee & Health Club

### Overview & Features

## Product Features

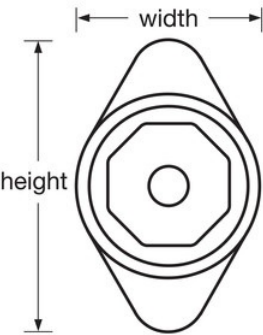
- Designed for standard single point horizontal latch lockers with hinges on the right
- NEW Patent Pending button-less combination change process for easier, faster combination changes - Longer useful life with 5 different pre-set combinations
- Metal dial provides increased strength and security
- Secure, easy to dial 3-digit combination
- End user registration and control charts provided to secure and simplify administration
- Blue, non-slip grip dial for school spirit and style. Also available in Red, Green, Purple or Black (features non-slip grip dial)
- Use Model 1656MKADA for ADA applications
- Extension kit available for doors with a thickness of 11/16in (17mm) to 3/4in (19mm)

## Product Details

The Master Lock No. 1652 features the new button-less combination change process technology, along with a new, stylish octagonal dial. With the new technology, the combination is changed with just your control key, from the outside of the locker. These locks boast the longest fully retractable bolt and a springbolt action for convenient, automatic locking. Standard key control used for combination changes and allows quick supervisory access. Customization options are available along with ADA compliant models.

Product Specifications

Product Number	1652MDBLU
Body Width	48mm
Colour	Blue
Description	Control Key, Commercial Boxed Packaging
Master Carton Qty	50



Master Lock Europe S.A.S.

10 avenue de l'arche - Le Colisée Gardens, bâtiment A - 92 400 Courbevoie - La Défense - France  
O:+33-1-41437200 | F:+33-1-41437204  
[www.masterlock.eu](http://www.masterlock.eu)