



Model No. 1671

Built-In Combination Lock for Lift Handle, Single Point and Box Lockers - Hinged on Left

Best Used For:



School, Employee & Health Club

Overview & Features

Product Features

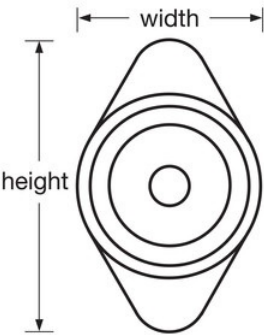
- Designed for lift handle, turn handle, and single point latch/box horizontal latch locker doors with hinges on right
- Manual deadbolt locking
- Secure, easy to dial 3-digit combination
- Longer useful life with 5 different pre-set combinations; easily changed to maintain security
- End user registration and control charts provided to secure and simplify administration
- Customize with optional color metal dials. Choose from Red, Blue, Green, Purple or Black. See Catalog for details.
- Use Model 1677MKADA for ADA Applications
- Extension kit available for doors with a thickness of 11/16in (17mm) to 3/4in (19mm)

Product Details

Offering high security in built-in combination locks, the Master Lock No. 1671 features a deadbolt locking mechanism and is designed to fit almost all locker styles. Ideal for mesh and ventilated lockers with access to the back of lock, the manual action requires the dial to be turned to relock the door. Five different pre-set combinations available for a longer, useful life in your facility. Standard key control used for combination changes, allows quick supervisory access.

Product Specifications

Product Number	1671
Body Width	48mm
Colour	Silver
Description	Control Key, Commercial Boxed Packaging
Master Carton Qty	50



Master Lock Europe S.A.S.

10 avenue de l'arche - Le Colisée Gardens, bâtiment A - 92 400 Courbevoie - La Défense - France
O:+33-1-41437200 | F:+33-1-41437204
www.masterlock.eu